



Cargo Packers and Movers Int'l Pvt. Ltd.



Dhobighat-3, Ring Road, Lalitpur,
Tel: 5153162/5153163/5153164 Extn: 204
Tel/Fax: +977-1-5153003

Email: cargopackers@gmail.com; anil.shrestha76@me.com
Web: www.packersmovers.com.np



Introduction:

Cargo Packers and Movers International Pvt. Ltd. was incorporated under the Private Company Act 2023 on 25th August 2002 and has its registered office at Dhobighat-3, Lalitpur, Nepal. The principal objective of the company is to provide freight forwarding services for both the import and export commodities to and from Nepal by various modes of transportation i.e. Air, Land (Road/Rail) and Sea.

The company is also particularly well-known for providing reliable services like Packaging, **Customs Clearance and forwarding** of imported and exported consignments by **Air freight** via Tribhuvan International Airport, Kathmandu, Nepal, by surface via **Kolkata/Haldia Port** by Road/Rail as well as via **Visakhapatnam port, India** by rail. The company ensures safe and timely delivery of every shipment by using integrated air, sea and road networks being capable of meeting all requirements including customs clearance, import/export documentation, insurance consultation, transportation, warehousing, packaging, order pick-ups or door-to-door delivery.



The company is also highly regarded for its expertise in the handling of International Removals and Relocations services including such services as **Export Worthy Packaging, Safe & Secured Warehousing, Consolidation Services of Loose cargo (LCL/LCL), De-consolidation of groupage cargo and Door-to-Door Deliveries.**

The group of dedicated individual with in-depth knowledge on international freight forwarding & supply chain management since 2 decades avails a fully compatible services required by the patrons. We are associated with very reputed global logistics Networks like IGLN- WCA family of logistics Network, International Association of Movers, Movers Poe who have wide coverage of most reliable Freight Forwarding agents all around the globe.

Our Company (Linking Nepal To The Rest of The World)

Comprehensive Transportation & Logistics Services Company providing

- Full Service Freight Forwarding-International & Domestic
- Customs House Brokerage services
- Full Truckload and Less Than Truckload brokerage services
- Flexible, Time Sensitive Service, Emergency services on humanitarian Crisis
- Worldwide coverage with broader networks of most efficient & competent Freight Forwarders
- Real Time Communication
- 24 hours Customers Service
- Specialized logistics Services developed for customers specific needs

What we do: -

- Provide Customers with a flexible array of Competitively priced, high quality total logistics solutions
- Become the company of Choice for logistics services in Nepal by earning the customers respect and loyalty
- Prove to ourselves, and the freight industry, time and again, that we deliver on our service promises, and exceed all expectations.
- Develop the most ethical, professional and dedicated sales, Customer Service, and operations personnel in the freight industry.
- Provide a challenging and rewarding work environment where opportunities for career growth and job satisfaction are a reality.
- Dedicate ourselves to continual improvement in every facet of our business
- Do our utmost to help our customers succeed while recognizing that our own success will inevitably follow.

Air Freight

At present, **Cargo Packers and Movers International Pvt. Ltd (CPM)** is widely well known as being one of the leading freight forwarding companies in Nepal dealing with both inbound and outbound cargo by air freight. **CPM** has developed an effective and remarkably reliable execution protocol as an air cargo agent within a period of time. The skilled man power at the company's disposal has been providing comprehensive global logistics and freight forwarding services with the intention of meeting all the requirements of its clients.

Air transport is considered as the most time efficient mode of transportation of the goods, and in humanitarian contexts is used both domestically and internationally. Unfortunately, the fastest delivery and efficiency of air transport comes significantly with higher costs but the service of air freight



have some limitation, restrictions and complexities depending on nature, dimension of the packages & total volume of goods. In emergencies, and especially natural disasters and conflict situations where road access is difficult, air transport is often the preferred alternative. However in the context of Nepal having only Tribhuvan international airport in Kathmandu handling international flights, air freight is always a challenge in terms of cost & handling of ODC & OOG cargo as only passenger aircraft are serving on the route.

In case of Dangerous goods (Hazardous Goods/Out of Gauge/Odd Dimension Cargo), we still have to rely either routing the air freight via NSCB Int'l Airport, Kolkata, India. Due to the treaty of Trade & Transit between Nepal & India that also allows Kolkata airport for the import consignments bound to Nepal, the consignments are often routed from Kolkata airport to Nepal by road. However the procedure is bit complicated as well as cost expensive too.

Besides, the regular air freight, the company could provide you the combined service of airfreight & surface (sea freight) for the time constraint shipment.

- a. Airfreight /Sea Freight
- b. Sea Freight/Air Freight
- c. Road/Air Freight

Ocean Freight (Sea Transport)

Cargo transport by sea/surface is by far the cheapest method for the movement of goods/humanitarian aids compared to the other major forms of transport in use and is considered most convenient for bulky pre-planned consignments. Sea transport is unfortunately also one of the slowest methods of delivering cargo as well. Sea transport will likely not be used to service on the immediate needs like in rapid on-set disasters, and is more appropriate for pre-positioning or, to serve post disaster and longer term needs.

Irrespective of the origin or, the destination of the cargo, the company ensures the fastest and most reliable transportation for all kinds of shipments including combined land/sea/air transport and containerized/non-containerized shipments. The company has a special rate contract with reputed N. V. O. C. C. (Non-Vessel Owning Common Carriers) at Kolkata, India who represent many ocean carriers around the globe and can thus offer competitive rates and reliable service.



The company offers complete logistics solutions to meet freight-related requirements. Its global service network covers key areas of world trade and its domestic networks cover all locations within Nepal. It has annual service contracts with different steamer lines for FCL shipment to different destinations (mainly to U.S.A. and Europe). The freight rates offered by **CPM** are reasonable when compared to market rates and it guarantees an unrivalled personalized service and tailored solutions to any particular need.

Containerization

The company's services shall also be offered for consignees located in Nepal and shall be handled from the hook point or Kolkata port for the delivery of the cargo and containers at the consignees' warehouses at a predetermined rate. Cargo shipped via sea tends to require the lowest attention to detail, especially if cargo is shipped using standard shipping containers. There are still a few things shippers should know when preparing cargo for sea movement. However Modern shipping containers have standardized interior, exterior and door dimensions. Containers also have pre-defined weight limits, set by the structural integrity of the containers and the rating on the cranes and vehicles used to move them.

Road Transport

Road transport is the most common methods of moving cargo globally. Road transport also happens to be something that individuals or shippers can easily manage directly without having to go through a broker or, third party. Trucks and vehicles can frequently be sourced locally, even in the early days of an emergency response, though quality of vehicles and roads may vary. Especially in the context of our country



being landlocked between China & India, there is always a huge scope for road transportation in Nepal. There are thousands of trucks & trailers plying between India & Nepal, Nepal & China, Nepal & Bangladesh as well as Nepal & Bhutan too to some extent. Also Road Transport is more flexible in comparison to Air freight, Sea Transport as well as Rail Freight too.

For ease of access, cost effectiveness and service efficiency of operations in Nepal, the firm also has associations with reputed transporters within Nepal and India. The company has secured a contract with a reliable transporter in Kolkata, India with an extensive network and ownership of a large area of land right outside the dock premises. These premises function as a warehousing facility with trucks, trailers, cranes, forklifts and many other machines and tools in order to accomplish various manoeuvres and operations required for transportation and shipping.

Humanitarian organizations have become increasingly reliant on third-party transport providers as a method of moving cargo into and around response operations. The overall running cost of using third-party companies may be higher, but in the volatile nature of response activities, outside companies can help start operations quickly, and organizations can start or, stop operations as quickly as needed without concern for what to do with large physical assets like trucks.

Even if an organisation owns its vehicles, there may well be occasions when a need arises for additional capacity to meet peak activity or other short-term needs. This can be met by the use of vehicles supplied by a third-party commercial transport provider. Third-party transport companies and arrangements can usually be sourced locally within or, near the emergency context, and utilizing them also serves the function of putting money into the local economy and fostering local acceptance of the aid agency in question. Organizations should follow all due diligence when soliciting and selecting third-party transport companies, and follow their own internal procurement procedures wherever possible.

CPM could avail the road transportation from Khasa/Tatopani Customs office as well as Kerung/Rasuwa Customs office located at Nepal China border to various destination in Nepal including customs clearance at Nepal customs offices.

Rail Transport

Rail transportation has a far limited scope compared to most other forms of cargo movement. The reality is rail movement needs specialized built out infrastructure - a rail network - that requires maintenance and is easily damaged by weather or conflict. Shippers utilizing rail to move cargo have very few options - the size of railcars is limited by the overall size of the tracks, and freight trains have a fairly limited set of destinations. In many contexts where many aid agencies work and operate, there will likely not be a functioning rail network all together.



Inflexibility - Rail is very suitable for the movement of large load sizes over longer distances, but it lacks the versatility and flexibility of motor carriers since it operates on fixed track facilities. Rail can only provide services terminal to terminal, rather than point to point delivery services offered by trucking. Though rail transport offers an effective method of bulk haulage, it can be very slow, especially considering loading, offloading, and overall railyard operations.

Containerization - much like sea freight, many railways can accommodate containerized cargo. There are no differences between the containers used in sea shipping and those use in rail shipping. The process of stuffing and sealing containers may occur at the shippers facility, or may occur at a consolidation point or forwarders facility. The same volume and weight restrictions apply to rail shipping using containerization as they do to sea shipping.

Loose Shipping - shippers may wish to ship less than full rail car loads using rail, or may not have access to intermodal container shipping through the desired rail line. Cargo can still be shipped using a variety of rail cars. Sending palletized or loose cargo via rail is similar to sending cargo with a third-party trucking company - cargo will be loaded onto the train utilizing pre-made and usually hard sided structures, and will be offloaded on the receiving end.

Customs Clearance and Documentation

The company has trained personnel for specialized jobs like preparing documents, processing of documents, managing transportation, planning shipments and port formalities. The staff implements measures guided by regular feedback they receive from customers to ensure trouble-free and smooth re-allocations when necessary. The company undertakes the job of customs clearance for both import and export cargoes from all the major ports along the Indo-Nepal border and the ICDs of Nepal. It can assist the customers with the time-consuming import/export formalities, i.e. duties, clearing, documentation, etc.



Having knowledge about the diverse nature of government regulations, customs regulations and quarantine requirements around the world is essential for smooth dispatch and delivery of consignments. **Cargo Packers and Movers Int'l Pvt.Ltd** are authorized customs brokers with thorough knowledge about related laws, law of the land, rules and trade regulations which are required to solve the complex problems in international trade for the clients, providing them with simplified and clear solutions.

The voluminous documentation and complicated formalities for the clearance of imports or exports consignments at Nepalese and Indian customs can be highly cumbersome. The correct preparation and completion of clearance procedures are critical as heavy penalties may be applied in case of inaccurate procedures. In this context, **CPM** can ensure the documents are filed appropriately and the procedure is followed correctly in order to minimize clearance delays. The company personnel and agents are also present to ensure that every shipment is taken care of while loading and unloading. In addition, the company continuously monitors regulatory activity of Nepal's customs and related agencies to speedily implement changes affecting the clients' shipments. Since, **CPM** provides full compliance with documentation procedures and is aware of all transportation costs, the customer is able to avoid any unexpected or hidden expenses.

Packaging

The company is also particularly well-known for providing reliable services like complete service of packing of Commercial cargo as well as household goods of the returning citizens at the residence before arranging dispatch from Tribhuvan International Airport, Kathmandu, Nepal as well as via Kolkata/Visakhapatnam, India. The company has been reckoned as the professional packing company in the country. The company could avail the service of packing of both commercial as well as non-commercial cargo.



Financial Status

Cargo Packers & Movers Int'l Pvt.Ltd. has the fixed Capital of Nrs.1,000,000.00 (say, Nepalese Rupees One Million only) & paid up Capital of Nrs.1,000,000.00 (say, Nepalese Rupees One Million only). The annual turnover of the company for the year 2017-18 & 2018-19 were NRS.49,409,182.05 & NRS.61,599,941.56 respectively.

The latest audited financial reports for each of two preceding years & other statements / reports are enclosed herewith. (ANNEXURE 2)

Insurance Status

All the equipments & other assets of office & warehouses are insured with M/s Sagarmatha Insurance Co.Ltd. covering various risk & hazards. Further, the company has also insured the vehicles as a movable asset & an accidental insurance coverage for all the employees from M/s Sagarmatha Insurance Co. Ltd. The certified statements issued by the said insurance company stating the above are enclosed herewith (ANNEXURE 3)

Warehouse

Cargo Packers and Movers Int'l Pvt.Ltd. has acquired warehouses under its own & lease agreements with the following capacity:

- ◆ 8,000 Sq.ft. covered warehouse at Dhobighat-3, Lalitpur, Nepal
- ◆ 6,000 Sq. ft. Open space at Bhaisepati, Lalitpur, Nepal.
- ◆ 6,000 Sq.ft. covered warehouse at Nepal Food Corporation, Nakkhu, Lalitpur, Nepal



- Part of a properly functioning warehouse is the ability perform simple maintenance, conduct routine product inspection and address small issues without having to source external support. Basic tools and support items that should be available in any warehouse include:

- Weighing Scales
- Measuring equipment - tape measure or yard stick
- Sturdy ladders and step stools
- Rope, twine, plastic binding, and sturdy wire
- Packaging tape and duct tape
- Plastic pallet wrap
- Cleaning supplies - broom, bucket, mop
- Face masks and gloves
- Ear and eye protection
- High visibility vests
- Heavy-duty pens
- Note pads and writing materials
- Safety knife and scissors
- Industrial fans
- Chairs and folding table

A warehouse working with large MHE and palletized cargo will have some different needs than a small field level warehouse. Additionally, larger facilities may have contracts with professional cleaning or repair companies, while smaller facilities will be purely self-managed. The basic tools and equipment of a warehouse should reflect the daily needs of the operation, and the prevailing environmental conditions. Planners should think through their basic supply needs when establishing a warehouse; an overabundance of basic tools may cost more, but a lack of tools can stop an operation entirely.

With the above infrastructure of strategically located warehouses, **CPM** assists its customers to reduce fixed overheads, increase efficiency, cut down valuable management time and further, provides:

- ◆ 24 hours security via advanced security systems
- ◆ Full insurance
- ◆ Reliable shuttle service with their own trucks
- ◆ Rapid distribution

Distribution

The distribution means the effective movement of a goods or, services from the point of purchase till it is handed over to the end User. This may entail a chain of intermediate agencies passing the product down the chain within the organization before it finally reaches the consumer or, end-user. Or it could be direct from the point of purchase to the end user. Each of the elements in these chains will have its own specific needs, which the producer must take into account, along with those of the all-important end user. Reliability of the distribution chain is critical

International Relocation

An auxiliary human resources department is assigned to removal-related projects. Efficiency in dealing with removal and relocation has earned CPM a unique reputation as a packing & moving company in Nepal.

Project Cargo Handling

CPM also has an ongoing cargo project with **Shanghai Construction Group** for Countermeasure Construction for the improvement of Kathmandu Ring Road maintained by the Department of Roads, the Ministry of Physical Planning, Infrastructure, and Transport.

To rise above the cutthroat competitiveness in worldwide markets and establish a company's reputation as a well-reputed service provider, consistent prompt and reliable service over a period of years is absolutely mandatory. In fact, those are the key factors that are primary indicators for benchmarking quality in the field of freight forwarding. Excelling in these have made **CPM** a force to be reckoned with among the well-reputed organizations operating in this sector. Genuine attempts to consistently and effectively deliver products in absolutely flawless condition and to cut no corners in terms of customer service has earned the company the admiration of overseas freight forwarders and suppliers.

The company's services shall also be offered for consignees located in Nepal and shall be handled from the hook point or Kolkata port for the delivery of the cargo and containers at the consignees' warehouses at a predetermined rate.

Code of Ethics

1. We respect the international human rights and strictly reject Child labour.
2. We readily extend our support to prevent restricted goods from being transported in accordance with the law of land.
3. We accept commonly accepted human right.
4. We have incorporated a global health and safety management system to ensure occupational safety.

By acknowledging and incorporating antitrust, anti-corruption and Bribery laws into our code of conduct, any employee, customer or stakeholder will be able to feel reassured that fairness is at the heart of our business.

Our Values

The values that guide our decisions and our behaviours are:

Quality & Professionalism- highest possible standards of workmanship & ethics

Flexibility, Transparency & Reliability

Team Building & Teamwork

Respect

Accountability

Integrity

Proactive & Innovation

Efficiency

Safety & Security

Customer care -responsive to our clients needs and expectation, Performance

Vision

We will dedicate our time and efforts to be recognized as one of the leading freight forwarding & logistics Solutions providers in the regions we operate. We will value every business relationship through quality and fairness to gain confidence of our employees and customers.

We will be the most customer focused global provider of freight forwarding and logistics solutions- a trusted, Valued and respected partners. We will do business with Passion, Integrity and energy & to provide quality services that exceeds the expectations of our esteemed customers. We will become leading customer focused freight forwarding warehouse too. We will connect people, businesses, and communication to be a better future-through logistics.

To be a world class provider of Freight Forwarding, logistical and Supply chain Management Services through

- Driving improvement in the supply base and acting as a liaison between the shippers, importers, transporters and other stakeholders.
- Development of Strategic, long-term objectives to improve customer relations; give quality and unique customized logistical solutions in service delivery.
- To do business with passion, integrity, and efficiency
- To provide the quality services that exceeds the expectation of our esteemed customers

Our Commitment to our Employees:

Reward to performance

Foster Entrepreneurial attitude

Mission Statement -is to provide complete Global logistics solutions

- We will become the most respected and admired freight forwarder/ Customs broker in our market. We will achieve this goal by providing reliable, cost effective services and solutions to our clients.
- Our Objective is to be the best in our industry by continuing to improve our level of our service.

- We believe in providing the best available solution to your needs, within the various departments of Freight Forwarding & logistics, to be recognized as your partners in Success.
- Promoting Excellence and integrity in Logistical, and supply chain Management
- Creating innovative logistics solutions and provide customized freight forwarding services that make business partners more profitable and maximize shareholders value.
- To provide design, implement, and manage global logistics services and planning, optimization solutions involving any mode of transportation, anywhere and anytime, to become strategic partners to our customers business.
- Our goal is to exceed our customer's expectation by ensuring quality and excellence in every aspect of business. By placing emphasis on employee satisfaction, we will ensure our success in market leadership, shareholders values and most importantly customer satisfaction.

Quality Policy

To consistently meet or, exceed our customers expectations by providing high-quality transportation and logistics services that satisfy the needs of the markets we serve.

Quality Improvement:

It can be distinguished from QC in that quality improvement is the purposeful change of a process to improve the reliability of achieving an outcome.

In the humanitarian context it is sometimes defined as:

"the minimum level of performance that fulfils a requirement."

Some terminologies that are commonly used in relation to quality are: performance, compliance, standards, specification and conformity

Choosing a Freight Forwarder

Freight Forwarders are companies which specialize in all of the components of International Freight & Logistics. They are experts which have vast knowledge, experience and understanding of the complex transport and logistics arrangements that are involved to get your goods delivered all the way through to your international customers. When your goods leave your warehouse, there are so many import processes involved to get goods cleared through the port, comply with all regulations, supply the correct documents, delivered to the correct container yard and loaded onto the correct vessel. Freight Forwarders also specialize in integrated modes of transport, so can easily arrange the movement of Freight between road, rail and sea.

Freight Forwarders have vast experience dealing with complex customs regulations, different port services, quarantine/inspections services, Stevedores and shipping lines. You should carefully research and deal with an experienced freight forwarder who takes the time to come out and meet at your premises to clearly understand your business and your requirements. Don't just deal with a freight forwarder based on price as you will need someone with experienced shoulders to overcome any obstacles and potential delays, and a company that will provide you with a high level of service. Choosing a forwarder based on price can cost your business more in the long run.

A good freight forwarder will work out exactly what you need and break down their services-from Container pick up from your warehouse, delivery through the port and loading onto the vessel. A local representative will also give you international shipping rates to get goods shipped through to the country to destination. Because freight forwarders move large volumes of shipments through several different shipping lines, they will be able to give you better shipping rates than if you were to try to deal with shipping lines directly.

Your freight forwarder will have to receive all correct shipment details and paperwork from you so they can organize the export process. When you create all of your export documents using inco-docs, you can email them directly through to your freight forwarder so they can streamline the export process.

Current Activities

At present, **Cargo Packers and Movers International Pvt. Ltd.** holds valid contracts with:

UNDP for customs clearance and freight forwarding services by air transportation

UNICEF, Nepal Country Office for import clearing and forwarding of goods by air transportation,

UNICEF, ROSA for import clearing and forwarding of goods via Tribhuvan International Airport's customs,

International Federation of Red Cross & Red Crescent (IFRC) for customs clearing and forwarding of export and import commodities via TIA customs as well as via Kolkata and Haldia ports,

International Organization for Migration (IOM) for customs clearance and freight forwarding services by air and surface mode,

UNWFP, WHO, UNFPA, UNHCR, UNOCHA for import customs clearance and freight forwarding services by air,

M/s Laxmi Intercontinental Pvt.Ltd. (sole distributor of Hyundai vehicles in Nepal) for clearance and forwarding of imported cars ex Kolkata/Haldia ports to Nepal. Also engaged in customs clearance and transportation of containerized and un-containerized cargo,

M/s United Traders Syndicate Pvt. Ltd. (sole distributor of Toyota brand vehicles in Nepal) for clearance and forwarding of imported cars and spare parts (containerized / un-containerized) ex Kolkata/Haldia ports to Nepal,

M/s Pooja International Nepal Pvt. Ltd. (sole distributor for Volkswagen vehicles in Nepal) for import clearing and forwarding of the vehicles and spare parts (containerized / un-containerized) shipment ex Kolkata/Haldia ports to Nepal,

M/s Laxmi Premium Motors Pvt. Ltd. (Sole Distributor of BMW Vehicles) for official freight forwarder for import of shipments of brand new BMW vehicles, Spare parts into Nepal.

M/s Dish Media Network Ltd.: official freight forwarder for the digital satellite channel service provider in Nepal.

Besides the above activities, the company is also engaged in:

Warehousing facilities (dry and air-conditioned) for **UN agencies** and other international organizations on short and long term basis,

Packaging and forwarding of removals belonging to **UN** expatriate staff and other diplomatic agencies,

Relocation of various **UN** agencies, diplomatic agencies and embassies in Nepal,

Sales, lease or rental of ISO Containers to **UN** agencies and other international organizations for storage and warehousing purpose,

Transit warehousing for export/import goods via air/surface mode for various **UN** agencies

Providing **insurance consultation** and **arrangement of insurance coverage** for export/import goods through reliable insurance companies on behalf of the client),

Labor contractor to various INGOs and diplomatic organizations,

Freight brokerage services to various shipping lines and N. V. O. C. C. ((Non-Vessel Owning Common Carriers) operating in the region.

The company has been associated with **United Nations in Nepal** through **UNDP** since 3rd July 2006 (Contract No. 2006/PROF/004) as well as Contract: 2009/PROF/033 dtd. 29 July 2009 & with **UNICEF** under LTA contract No.: LTA/NEPA/2015/001 dtd. 05th May 2015.. During the tenure of almost three years, the company put its utmost effort to execute the given tasks to the satisfaction of **UN** agencies. The Company also assisted **UN** for setup establishment of **UN** Mission in Nepal, for peace keeping process. Besides, the company was instrumental in clearance & transportation of Winterization Kits of **UNDP** from Khasa, China, the very first surface consignment of **UN** from Khasa, China border (contract no. 2009/PROF/008 dated 31.03.2009).

Similarly the Long Term Agreement for Customs clearance & Freight forwarding services was signed with UNICEF on behalf of UN agencies in Nepal under the agreement No.: LTA/NEPA/2015/001 for both air as well as Surface shipment & LTA for service #42408856 for customs clearance & freight forwarding services for Air shipment till date.

Board of Directors

The company is headed by Mr. Anil Shrestha, a permanent resident of Lalitpur, Nepal has been involved into an area of freight forwarding since the year 1997. As a founder, he has an extensive knowledge of freight forwarding activities and multi-modal transport. With a masters degree in statistics, Mr. Shrestha began his career in the year 1997 and since then, he has gained a vast experience in handling commercial, non-commercial, warehousing, supply chain, Distributions as well as projects cargo Handling. His expertise consists of heavy lift, break bulk, removals, missionaries' consignments ex Kolkata/Haldia & Visakhapatnam ports, India as well as ex Khasa, & Kerung, China located at Nepal China border and through Tribhuvan International Airport, Kathmandu, Nepal.

Company Structure

At present, Cargo Packers and Movers International Pvt. Ltd. has five different departments within the company:

- ◆ **Operations:**
 - a. **Airfreight:** handling and clearance as well as transportation of consignments to and from Nepal via TIA Airport
 - b. **Sea freight:** Surface handling clearance and transportation of consignments to and from Nepal through land/sea network
 - c. **Road Freight:** Road transportation between Nepal -India, Bangladesh, Bhutan
 - d. **Rail Freight:** Rail transportation between Kolkata-ICD Birgunj & Visakhapatnam to ICD Birgunj
- ◆ **Business Development Dept.**
 - Marketing Dept.
 - Sales Dept.
- ◆ **Finance Dept. :** Accountability plays the very vital role on the future of the company
- ◆ **Warehouse:** The department handling warehousing, Distribution, Safety/Security of goods in Storage.
- ◆ **Removals:** The department deals with handling, packaging of household goods prior to export of the returning citizen expatriate staff of UN, INGOs, Missionary, & embassies in Nepal.

The company has a highly motivated group of employees (administrative and technical staff) and draws its strength from its professional management, experienced and capable workforce, sound financial resources, excellent rapport with the governmental agencies, its connection with the mandarins of trade, and above all, the continued support from its valued clients. With a long and formidable experience in providing services as specified by international organizations, its professional management team is fully capable of executing any logistics related requirements without any hassles. The company deals with each and every project with extreme diligence and is always committed to undertake appropriate actions to ensure the complete satisfaction of valued clients.

The management team has decades of collective experience in shipping, air-freight, shipment handling, export/import, container stuffing/de-stuffing, container loading and unloading, consolidation of cargo under customs supervision and break bulk vessels even though the company is relatively new with only seven years of operational experience. Furthermore, the company also has a great deal of experience in export, import and transportation with excellent contacts within the cargo and logistics sector globally.

Our professionally skilled employees are keenly receptive to every need of our customers and strive to provide the best possible service. **CPM** follows a flexible approach for the convenience of customers by offering fully comprehensive door to door moving and relocation services. The range of solutions the company offers includes shipping, transportation, forwarding, warehousing, insurance, custom clearance and documentation.

Key personnel responsible for dealing with procuring entities to negotiate and execute contractual services:

Mr. Anil Shrestha, Managing Director (Head of the Organization)

Mr. Mukti Nath Sharma, Director (Marketing and Sales)

Mr. Nawaraj Adhikari, Operation Manager-Air Transportation)

Mr. Gopal Baskota, Senior Officer (Operation Manager-Sea/Road Transportation)

Mr. Lalbabu Shah- Finance, Manager

Mr. Hareram Dhakal- Information management Assistant

Business Associates

Representative agent at Birgunj, Nepal

M/s Narayani Clearing Service, Birgunj, Nepal is the company's representative office at Birgunj & Biratnagar for customs clearance operations and onward forwarding of import and export consignments ex Kolkata/Haldia ports, India. A valid agreement has been made with Narayani Clearing Service to use their service for customs clearance of goods at Indo-Nepal Border customs offices according to the needs of **CPM**.

(Please refer to relevant documents listed and attached)

Representative agent at Kolkata and Haldia, India

On behalf of **CPM, M/s M/s Sunshine Cargo Services Pvt.Ltd., Marshall House, Kolkata, West Bengal, India** is the authorized agent for executing customs clearance and forwarding of the Export/Import consignment at Kolkata Customs House & Kolkata port Customs under Kolkata Port Trust, West Bengal, India. The a/m agent is also authorized to execute customs clearance of imported vehicles consignment via Kolkata and Haldia ports, India. A Memorandum of Understanding (MoU) has been signed with M/s Sunshine Cargo Services Pvt.Ltd. for services related to customs clearance and forwarding of containerized/non-containerized goods, vehicles and machineries at Kolkata/Haldia ports, and to forward the goods to Nepal.

The latter has wide experience & knowledge of customs rules & regulations procedures for customs clearance of Nepal bound consignments at Kolkata Customs House & well versed for the procedural formalities to be accomplished on timely manner without any financial burden on the part of the importer due to extended delay on import customs clearance of the consignment at Kolkata customs/port. The agency has wide experience on clearing & forwarding of imported containerized/non-containerized, break bulk, heavy lift and ODC cargoes from Kolkata and Haldia ports to Nepal & extended our capacity at times of high demand and emergency.

Specialized Services

1. Project Cargo & Break Bulk Services

Cargo Packers & Movers International Pvt.Ltd. has also geared up its experience considerably in handling of Project Cargo/ Odd dimension cargo, Heavy equipment, Machineries & Spare etc. In the recent past, the company has handled the huge shipment of **Transmission equipment & Accessories of NEA, 220 KVA Bharatpur-Bardhghat Transmission Line project of CCPG, Wuhan, China**. The company also had the opportunity to handle bulk consignment of **GI Wires & Steel Re-bars donated to Department of Water Induced Disaster Prevention** to various locations of Nepal under Non Project Grant from the People of Japan.

The company arranges break bulk consignment handling depending on the shipment. Similarly, the company also arranges varieties of containers to accommodate a vast array of cargoes & provides the customers with Containers that allow consolidating mixed general cargo packages, thus saving time and money.

2. Other special service

- Arranging inspection from SGS or other related bodies for quality & quantity certificate.
- Arrangement for On board stevedoring as well from the hook of the vessel to Port Shed.
- Consultation for transfer of goods from Port shed to delivery end by Truck or, Rail.
- Order follow up and Supply chain Tracking systems
- On the spot/factory stuffing of containers

Logistics and Distribution Management services

E-commerce: The offices as well as the associated offices on various regions & Nepal customs offices are connected using modern communication systems Email & Internet facility. Information and instructions are constantly updated to have the knowledge of exact position of a shipment. The offices are well equipped to provide quick information and facilitate smooth & efficient handling of cargo.

We maintain a close track of all correspondence. Every effort is made to reply to the letters or fax, e-mails etc. within a few hours and wherever possible, immediately.

Affiliations

NEPAL FREIGHT FORWARDERS ASSOCIATION-NEFFA

URS 9001:2015 ISO QUALITY MANAGEMENT SYSTEM

MOVERSPOE

INTER GLOBAL LOGISTICS NETWORK-WCA Inter-Global Logistics Network

INTERNATIONAL ASSOCIATION OF MOVERS

CANADIAN ASSOCIATION OF MOVERS?

OUR OFFICE ADDRESS:-

HEAD OFFICE:-

CARGO PACKERS & MOVERS INT'L PVT.LTD.

DHOBIGHAT, LALITPUR,

G PO.BOX: 13996, KATHMANDU, NEPAL

TEL: (977)-1-5153162/5153163/5153164

TEL/FAX: 00977-1-5153003

E-MAIL: cargopackers@gmail.com; anil@cargopackers.com.np

Cargopackers01@gmail.com;

Web: www.packersmovers.com.np

BIRATNAGAR OFFICE:

MR.SANTOSH KHAREL

BIRATNAGAR CUSTOMS AREA,

RANI, BIRATNAGAR.

CELL NO.: 9852020331

BIRGUNJ OFFICE:-

BIRGUNJ CUSTOM AREA,

BIRGUNJ, NEPAL

TEL: 00977-051- 523447, 523448

CELL: 9855020396

PIC: SANJESH KUMAR SHRESTHA

BHAIRAHAWA OFFICE:-

NEAR BHIRAHAWA CUSTOMS OFFICE,
NEPAL.

PIC: MR.PRACHIN THAIBA/MR.SATISH THAIBA

TEL: 071-418217/418055

CELL: 9857022157 /9857012108

EMAIL: satishthaiba@gmail.com; thaibaclearing@yahoo.com

MECHI OFFICE:

EVERGREEN TRADE CENTER

MECHINAGAR-10, KAKARVITTA,

JHAPA, NEPAL

TEL: 023-526363, 563233

FAX: 023-562825

EMAIL: etc.kpandey@yahoo.com

PIC: MR.KUMAR BUDHATHOKI

CELL: 9852672524

NEPALGUNJ CUSTOMS OFFICE:

NEAR NEPALGUNJ CUSTOMS OFFICE

BANKE, NEPAL

PTC: MR.AMRIT SHRESTHA

CELL: 9858022044

EMAIL: amritshrestha431@gmail.com

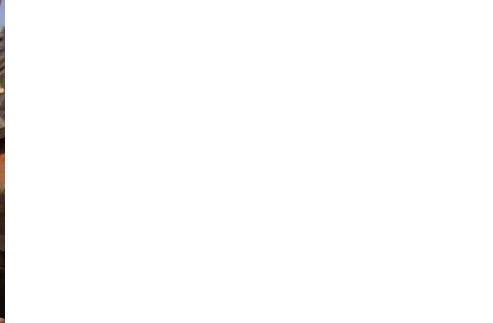
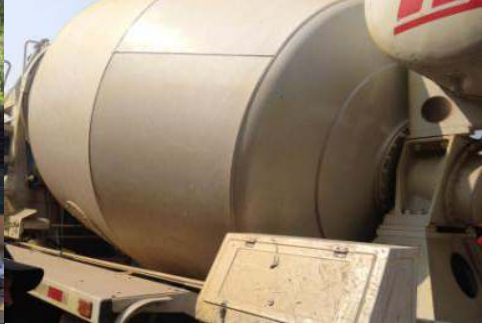
Photo Gallery (Cargo Packers & Movers –In action)
Import consignment Handled for United Nations Mission in Nepal





Armoured Jaguar Brand Vehicles Ex Kolkata airport to Kathmandu for Former King Gyanendra Bir Bikram Shah









Bulk shipment of Steel Reinforcement Bars from Kolkata port to Kathmandu, Nepal
For Department of Road (Shanghai Construction Group)



Eastern Hydropower Pvt.Ltd.- Steel Plate (Bulk shipment)-Bhojpur, Nepal





Nepal Electricity Authority -CCPG-Danda, Nawalparasi, Nepal (Towers-Transmission Line)



Transmission Line-Cables



Nepal Telecom



Export Nepal Army vehicles (UN Peace Keeping) to D.R. Congo





Bulk shipment of Silos from India





THINK

**DO IT THE SAFE WAY
DO IT THE RIGHT WAY
DO IT EVERYDAY**

